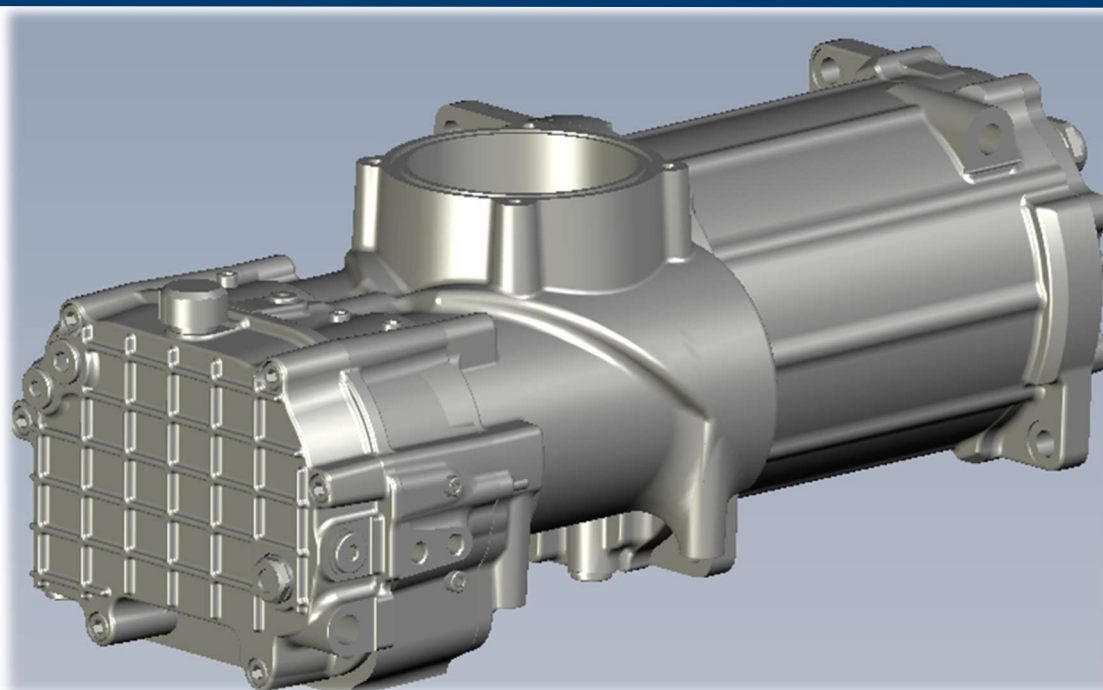


OA098



Layout	Synchronized twin screw single stage air compressor with integrated Permanent Magnet motor
Air Flow	12.5 m ³ /min, (250 g/s at 1 bar (abs) & 20°C)
Motor power	35 kW
Sealing system:	Double safety barrier seal
Cooling system:	Liquid cooled motor, compressor casing and gear casing.
Cooling liquid:	50/50 WEG Water/Ethylene Glycol Or De-ionized water
Overall dimensions	535 x 254 x 204
Weight Compressor+Motor	38.3 kg
Inlet pressure	0.9 – 1.1 bar (abs)
Pressure ratio	1.0 – 3.0
Speed range	0 – 20 000 rpm

Performance of OA098 fuel cell compressor

